



Arodene Road, Brixton, SW2

£600,000

2 bedroom flat - conversion for sale

Property Details

With almost 900 square feet, this spacious, two double bedroom Victorian converted flat, is split over three levels and situated in an extremely popular residential pocket, on a particularly sought-after road nestled within the Josephine Avenue conservation area. The separate living space features high ceilings, wooden floorboards, a bay window and a period fireplace. This fantastic room is full of appealing character, creating a perfect atmosphere to entertain or relax and unwind. The eat-in kitchen diner is ideally located close to the entertaining space with room for a large dining table. The heart of the home has all you need in terms of mod cons with an abundance of storage and surface space. A central staircase meanders up through the property and the two double bedrooms are both comfortable double rooms on separate floors, making the property ideal for anyone looking to rent out a second room or share with friends. The second of the bedrooms is peacefully tucked away at the top of the building offering views across the surrounding neighbourhood with a lovely feature fireplace and access to substantial non demised loft space.

Council tax band D

EPC rating E (42)

Features

- Two double bedrooms
- Almost 900 square feet of internal space
- Split-level Victorian conversion
- Access to substantial loft space (not demised)
- Bright and characterful throughout
- Sought-after quiet residential street
- Close to Brockwell Park
- Brixton High Street in minutes



Arodene Road, Brixton, SW2



Arodene Road

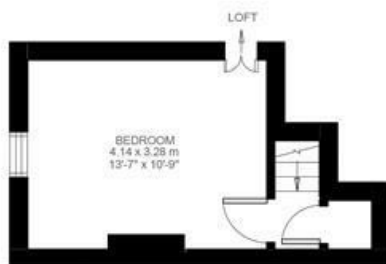
2 Bedroom Flat

Approx internal area:

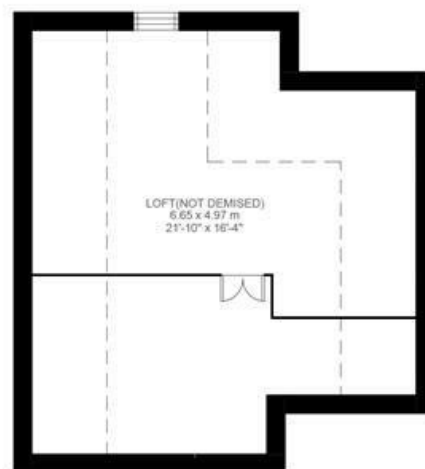
869 sqft 81 sqm

(EXCLUDING LOFT)
LOFT 43.85 SQ.M / 472 SQ.FT
INCLUSIVE TOTAL AREA 124.85 SQ.M / 1344 SQ.FT

While we do try our very best,
floor plans are produced as a
guide only and we take no
responsibility for the precise
accuracy with which any
property is represented



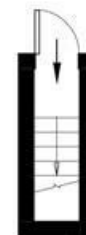
Second Floor



Third Floor



First Floor



Entrance To First Floor



Arodene Road, Brixton, SW2

